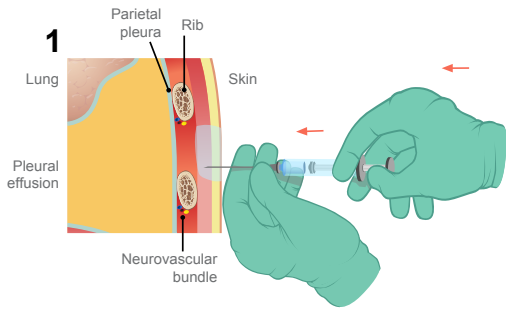
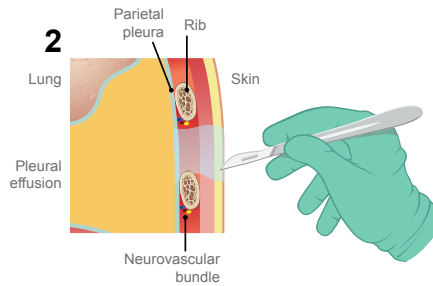


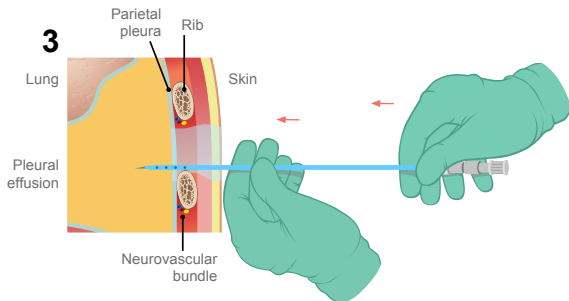
PIGTAIL CATHETER THORACENTESIS



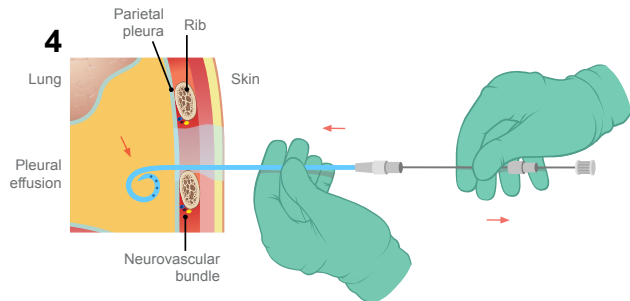
1 Local anesthetic is used. Note that the needle should not be advanced beyond the distance from the skin to the chest cavity as demonstrated on ultrasound.



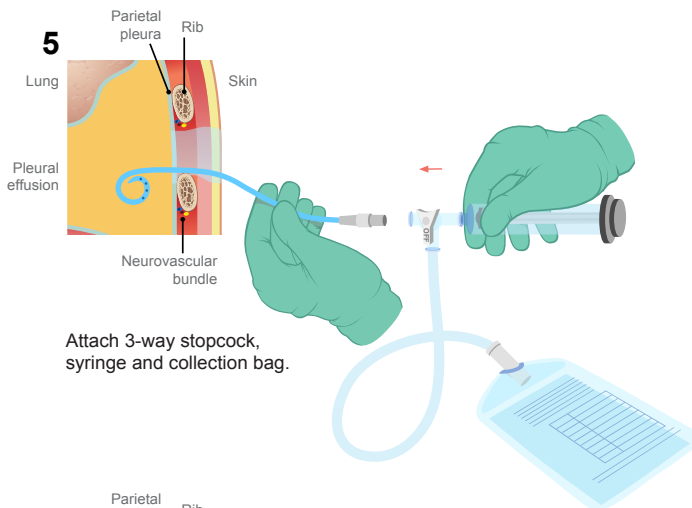
2 Nick with scalpel.



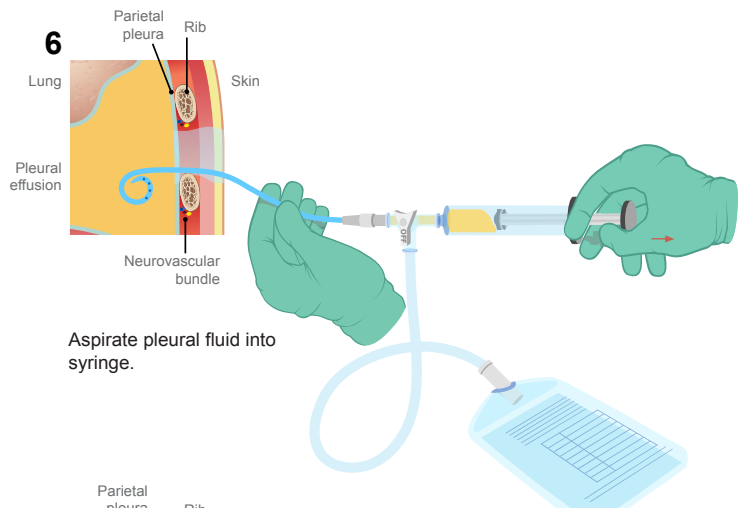
3 Insert catheter with trocar and needle. Note the catheter should not be advanced more than the distance to the pleural fluid as demonstrated on ultrasound.



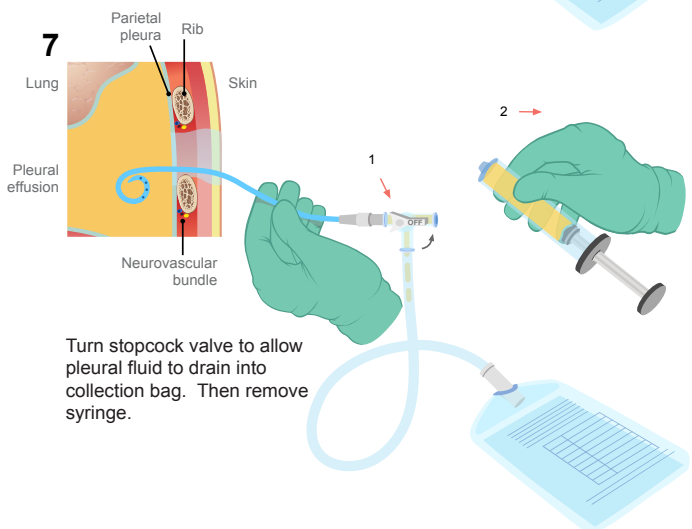
4 Remove trocar and needle while simultaneously advancing catheter. Only the tip of the catheter with the drainage holes should be in the chest cavity.



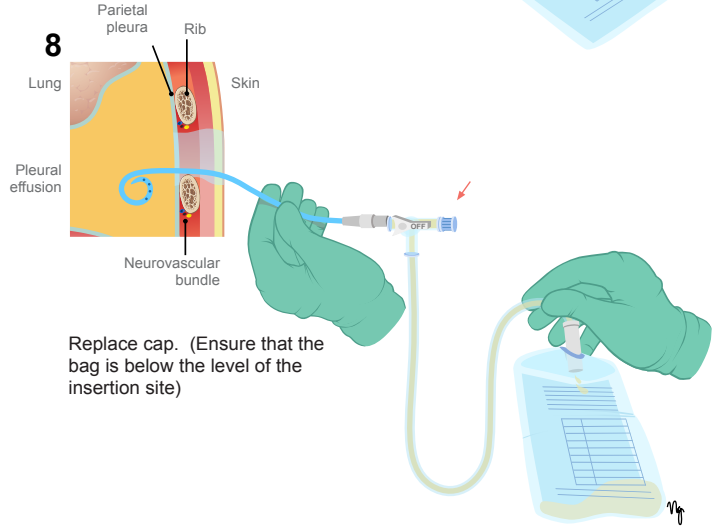
5 Attach 3-way stopcock, syringe and collection bag.



6 Aspirate pleural fluid into syringe.



7 Turn stopcock valve to allow pleural fluid to drain into collection bag. Then remove syringe.



8 Replace cap. (Ensure that the bag is below the level of the insertion site)